

INTREPID INDUSTRIES, INC.

2305 S. Battleground Rd. • La Porte, TX 77571-9475 • Phone: 281-479-8301 • Fax: 281-479-3453

SAFETY GATE INSTALLATION

REMEMBER YOU MUST MAKE SURE

1. Blade of gate is long enough to contact, and extend past, opposite side guardrail post by 1" or more.
2. Support block is mounted below top rail of gate to prevent vertical deflection. IT SHOULD NOT MAKE CONTACT WITH THE GATE OR INTERFERE WITH IT SWINGING CLOSED.
3. Double bar safety gate is *no more than 42"* above the platform surface to avoid too large of an opening below the gate.

STEP 1 MOUNT HINGE & GATE

1. Top of hinge should be mounted as close as possible to the top of guardrail. Ideally the hinge's top bolt hole should be located 7/8" down from top rail. Of course, this may need to be adjusted depending upon the type of guardrail members being used.
2. Locate 2 - 11/16" holes on 6 1/4" centers for 5/8" x 2 1/2" carriage bolts. Mounting holes should be positioned to allow clearance for tightening 5/8" nuts.

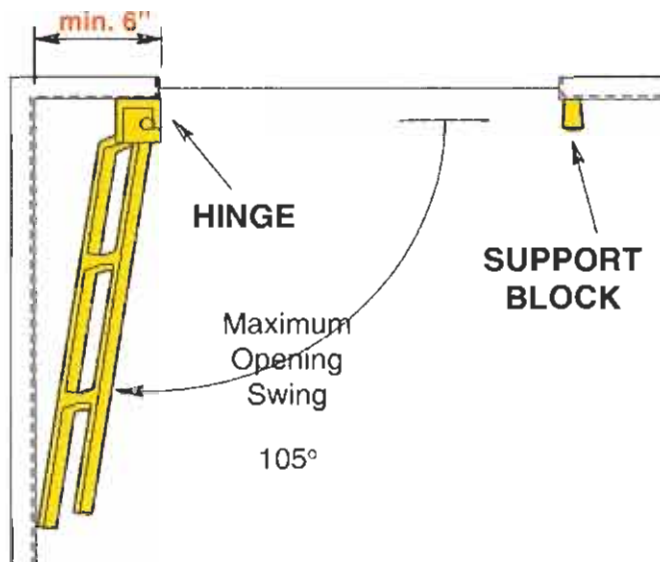
STEP 2 MOUNT SUPPORT BLOCK

1. Block **MUST BE LOCATED** in relation to where the hinge is mounted so that it **DOES NOT TOUCH** the gate. For field installations, simply mount the block *at least 1"* **BELOW** the closed bar. If mounting holes are being prepunched, locate the block's top bolt below the respective position of the top of hinge, as follows:
DG - 5" below top of hinge
SG - 8" below top of hinge
2. Locate and drill 2 - 5/16" holes on 1 1/4" centers for 1/4" x 4 1/2" carriage bolts. Allow clearance for tightening 1/4" nuts.

GUARDRAIL DESIGN WHEN GATE IS IN CORNER OF PLATFORM

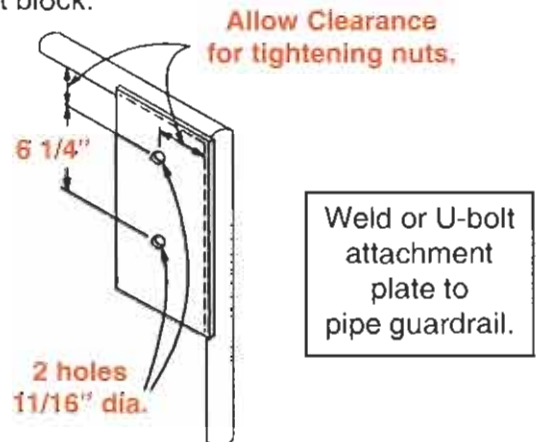
Provide at least 6" of stub-out railing in order to mount hinge. This should be done to:

- (1) give space for mounting hinge and
- (2) allow gate to open at least 90°.



ATTACHMENT OF SAFETY GATE TO PIPE GUARDRAIL

This drawing shows only the hinge side mounting plate. A similar attachment plate, using 1 1/4" bolt hole spacing, must also be made for the support block.



When attaching to pipe guardrail in this fashion, it is necessary to order additional gate length. Normally this only means ordering the next larger size.

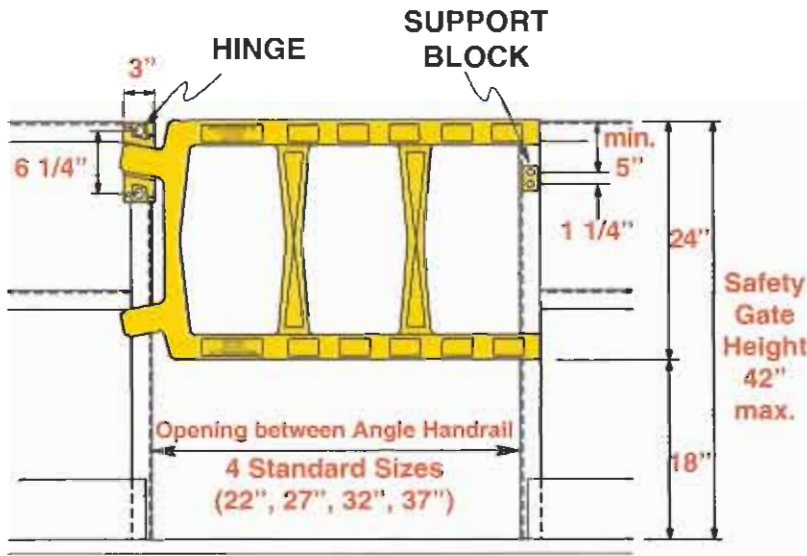
INTREPID INDUSTRIES, INC.

2305 S. Battleground Rd. • La Porte, TX 77571-9475 • Phone: 281-479-8301 • Fax: 281-479-3453

TYPICAL INSTALLATION OF DG - Double Bar Gate

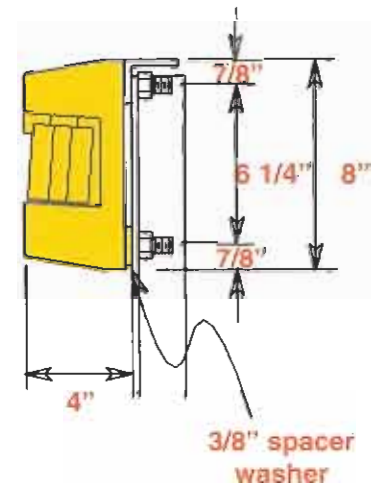
RIGHT HAND Double Bar Gate (DG 37R) is shown.

NOTE: Only one hinge and one support block are required for the DG gate.



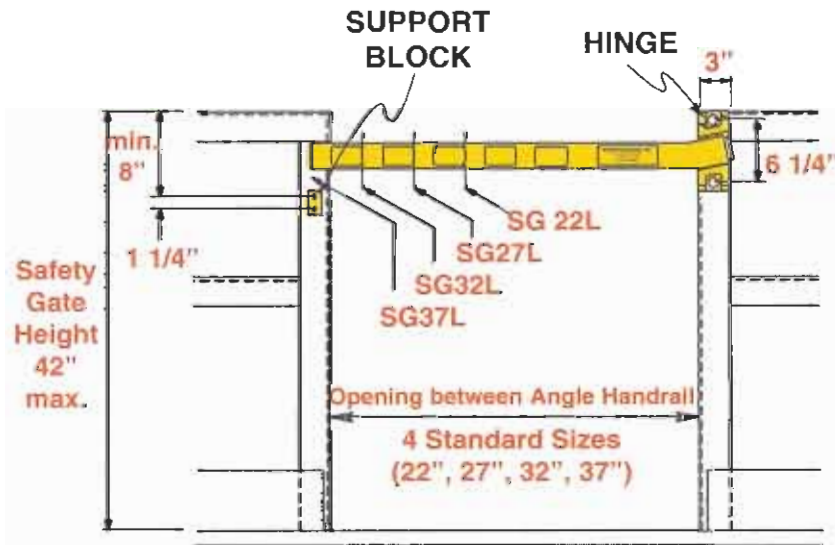
HINGE DETAILS

Make 2 - 11/16" holes for 5/8" x 2 1/2" carriage bolts.



TYPICAL INSTALLATION OF SG - Single Bar Gate

LEFT HAND Single Bar Gate (SG 37L) is shown.



SUPPORT BLOCK DETAILS

Make 2 - 5/16" holes for 1/4" x 4 1/2" carriage bolts.

